



Office of the State Controller

SAP Cloud Secure Login Client URL Change

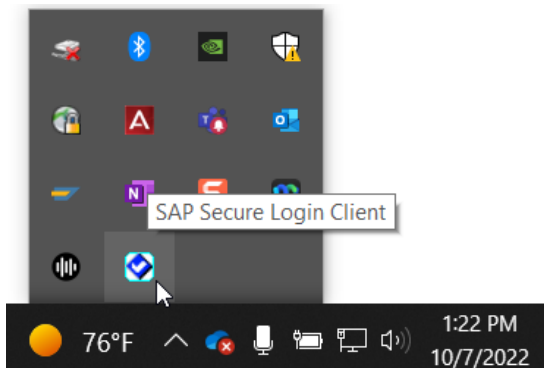
URL Change Instructions

Important: State Network or VPN is required to complete SAP SLC set-up.

The SAP SLC should be running in the background. Locate and click the “carrot” icon on the bottom right of your screen. This will show hidden icons.

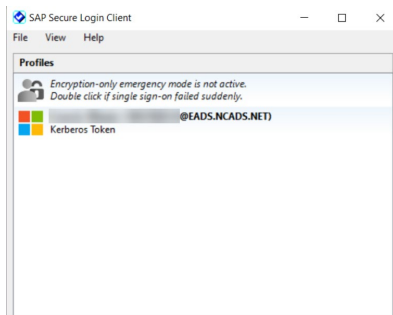


Click on the SAP Secure Login Client icon, shown below.



The SAP Secure Login Client window displays.

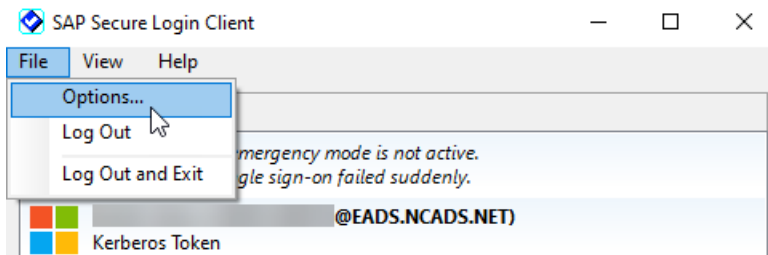
Note: You may see one or multiple lines in the Profiles section.





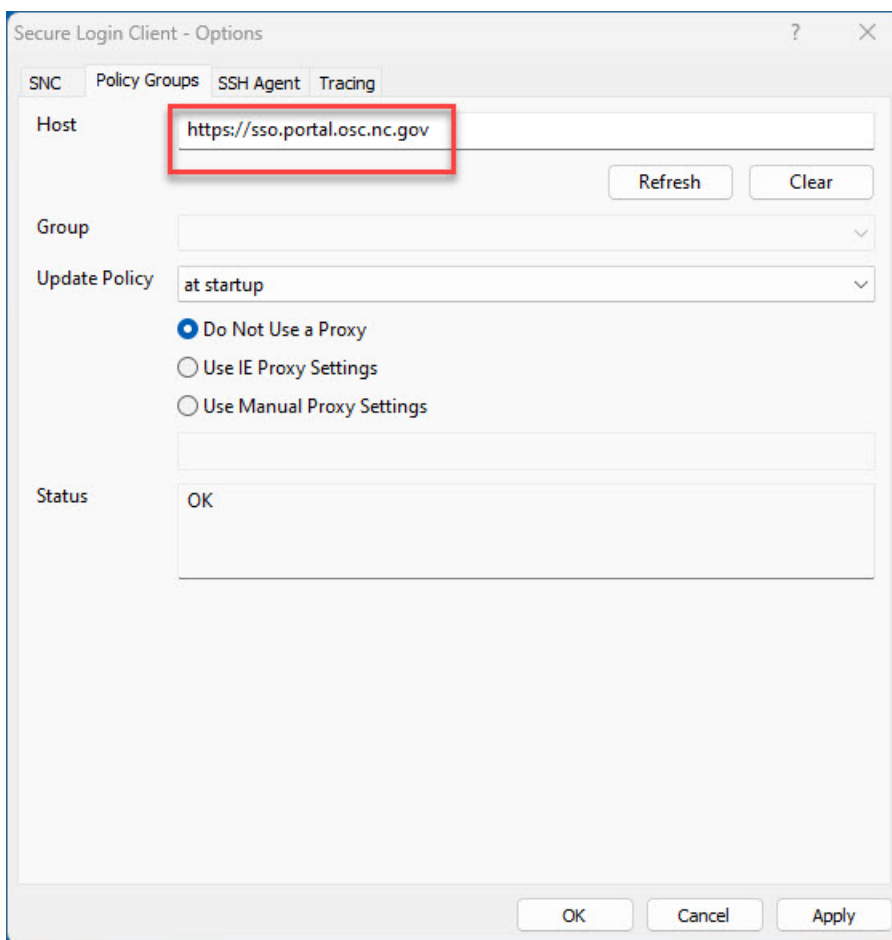
Office of the State Controller
SAP GUI Installation/Upgrade

Click on File, then Options...



Click on the Policy Groups tab. Click in the Host field, clear the existing URL, and then copy the following URL into that field:

<https://sso.portal.osc.nc.gov>





Office of the State Controller
SAP GUI Installation/Upgrade

Click the Refresh button under the URL.

Secure Login Client - Options

SNC Policy Groups SSH Agent Tracing

Host

Group

Update Policy

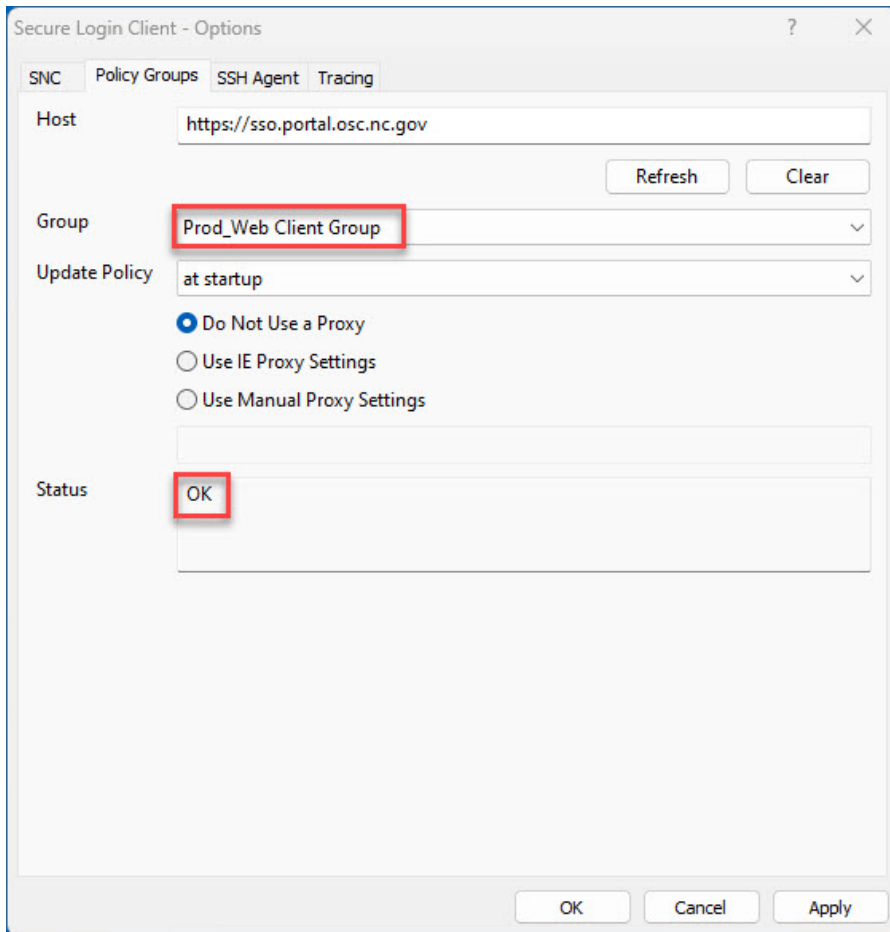
☒ Do Not Use a Proxy
☐ Use IE Proxy Settings
☐ Use Manual Proxy Settings

Status



Office of the State Controller
SAP GUI Installation/Upgrade

The Group field will auto-populate. Ensure the value is Prod_Web Client Group. The Status field will also update to "OK".



The image shows a screenshot of the "Secure Login Client - Options" dialog box. The "Policy Groups" tab is selected. The "Host" field contains the URL "https://sso.portal.osc.nc.gov". The "Group" dropdown menu is set to "Prod_Web Client Group", which is highlighted with a red rectangle. The "Update Policy" dropdown is set to "at startup". Under the proxy settings, the "Do Not Use a Proxy" radio button is selected. The "Status" field displays "OK", also highlighted with a red rectangle. At the bottom right, there are buttons for "OK", "Cancel", and "Apply".

Click Apply.



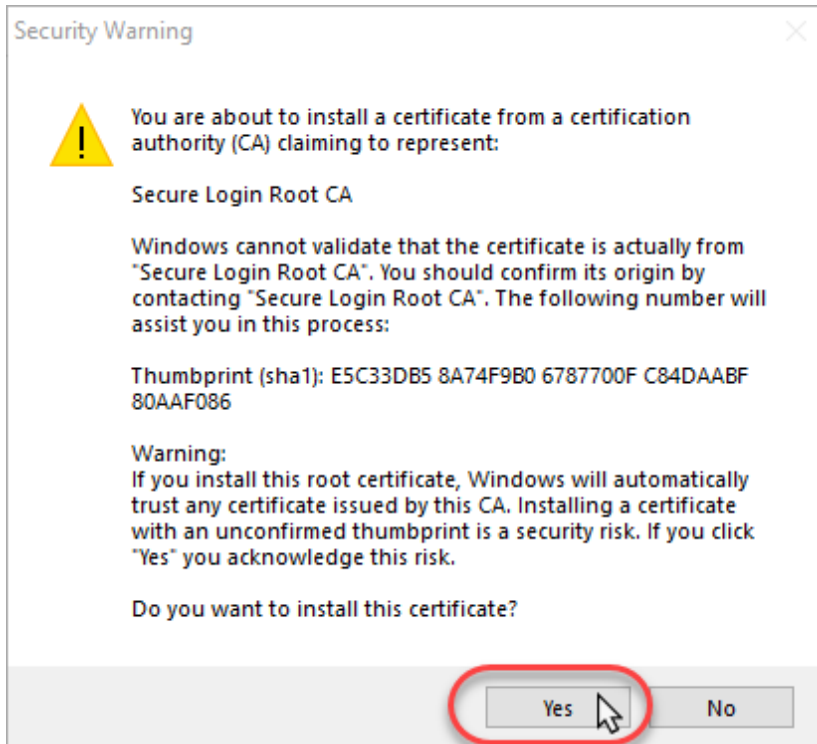
This image is a close-up of the bottom right corner of the dialog box, focusing on the "Apply" button. The "Apply" button is highlighted with a red oval, and a mouse cursor is pointing at it.



A Security Warning window may display. This is expected. Simply click Yes.

Note: If the Security Warnings pops up, and you do not see the Security Warning, you have two options:

- Check your other monitors.
- Or hover over the Secure Login Client in your Tool Bar.



Last step: Clear your browser cache. Select the **All time** option for the Time range field.

You have successfully completed the URL change set-up for the SAP Cloud SLC!

For support, please contact BEST Shared Services by phone at 919-707-0707 or via email submission at this [LINK](#).