



Office of the State Controller

SAP Secure Login Client Installation via Executable Download

Important: All users who work in the Integrated HR-Payroll System using the SAP GUI will need to have the SAP Secure Login Client (SLC) installed on their workstations. The SLC does not replace the SAP GUI. Users will need both the SAP GUI and the SLC to continue to login to the Integrated HR-Payroll System from the Fiori interface.

Installation by Download from OSC website

Most users will need to install the SAP SLC using this method. Before proceeding, please coordinate assistance with your internal IT support staff as PC Administration rights are needed for this method.

Note: To deploy Secure Login Client on multiple clients or unattended installation, please see instructions at the end of the file.

Important Information! User must “**exit**” SAP GUI application or errors will occur during installation/upgrade. Installation may require a reboot. Save and close all work before installing.

Access the OSC Technical Downloads website and locate the SAP Secure Login Client download:
[Technical Downloads | NC OSC](#)

Click on the SAP Secure Login Client download.

STATE OF NORTH CAROLINA
OFFICE OF THE STATE CONTROLLER

Search...

NC.GOV AGENCIES JOBS SERVICES

[Home](#) [State Agency Resources](#) [Training](#) [Public Information](#) [Vendors](#) [News](#) [Contact](#) [About](#)

NC OSC » State Agency Resources » Customer Service - HR-Payroll » BEST Support Materials » Technical Downloads

Technical Downloads

SAP Secure Login Client Installation via Executable Download

[SAP GUI Secure Login Client](#)

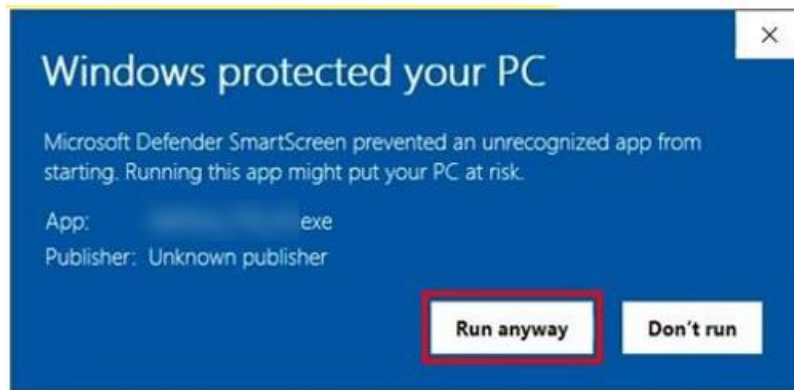
[SAP Secure Login Client Installation Instructions](#)



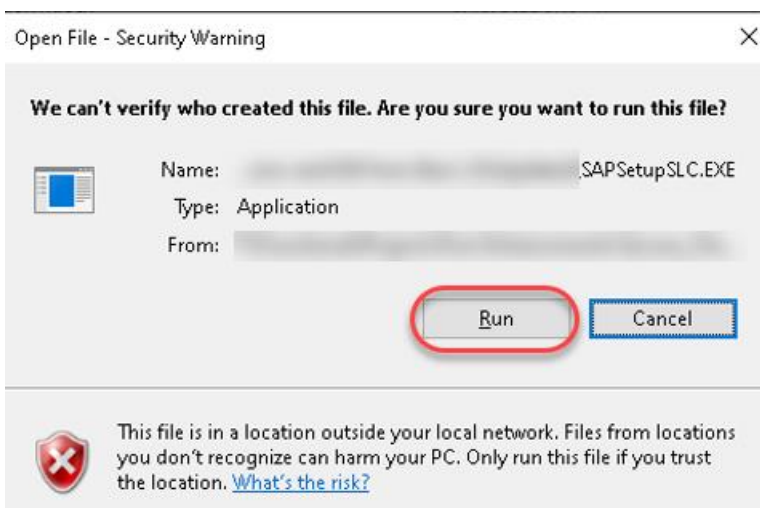
Office of the State Controller
SAP GUI Installation/Upgrade

Download the SAPSetupSLC zip file into a local folder. Then extract the zip file to the same location. Double click the SAPSetupSLC.exe to begin the installation. Pop Up Warnings may occur like the examples below. Click through these as outlined in the examples given. Also, you may be prompted for an administrative login.

Example #1: Click the More info link. Then click the Run Anyway option.



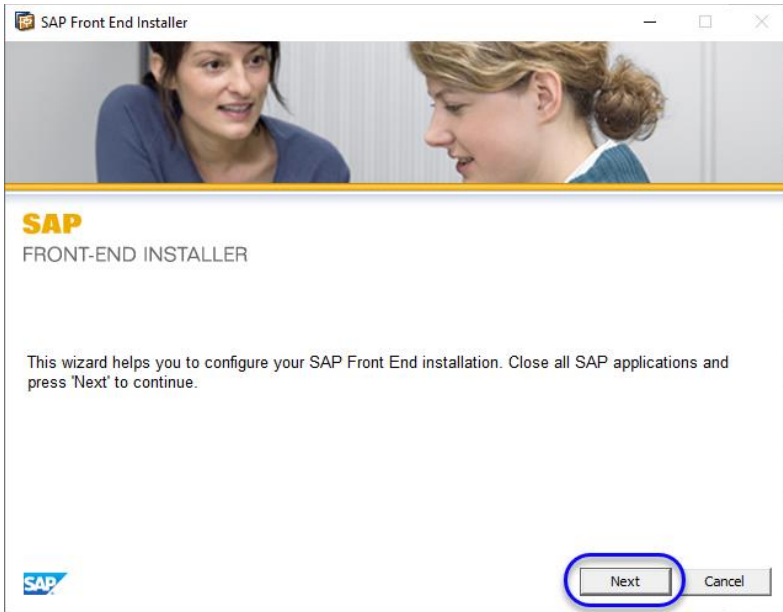
Example #2: Click on Run.





Office of the State Controller
SAP GUI Installation/Upgrade

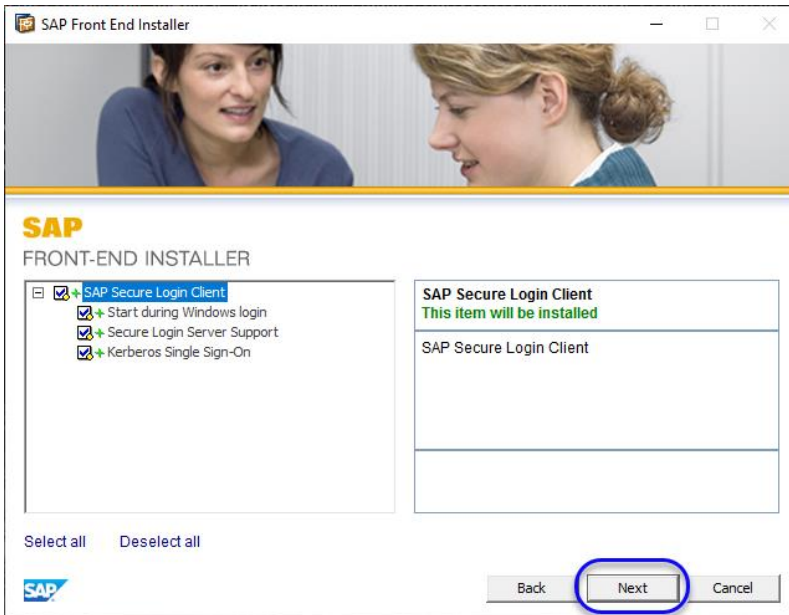
After clearing any warning messages, the SAP Front End Installer displays. Click Next.



Ensure the SAP Secure Login Client and all three options are selected on the left-hand side.

Important: All four items should be selected.

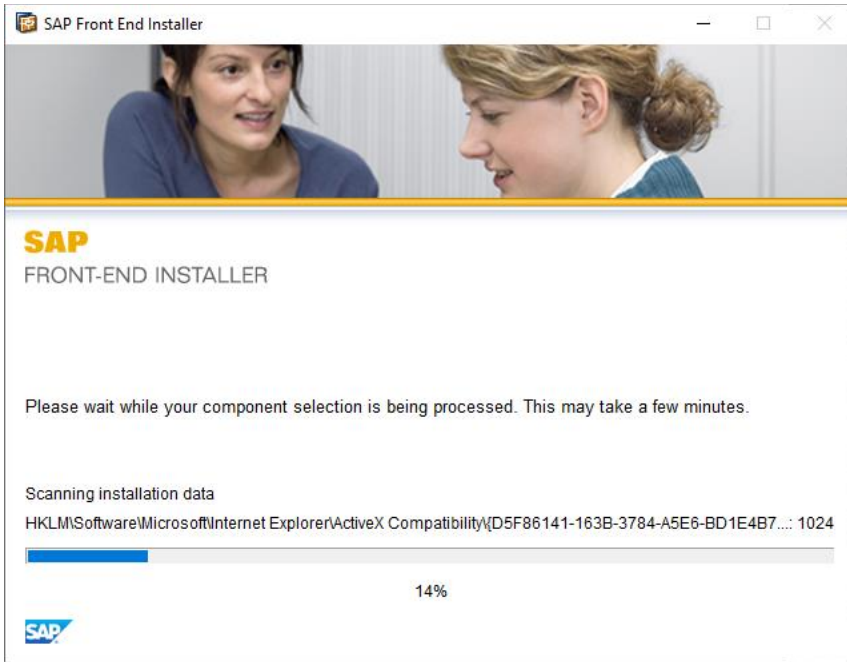
Click Next.



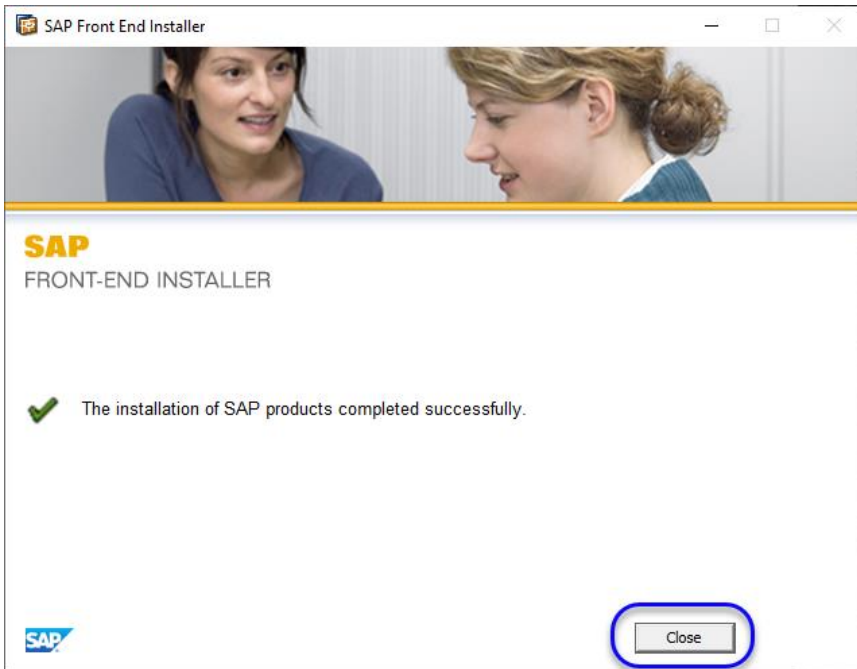


Office of the State Controller
SAP GUI Installation/Upgrade

The SAP Secure Login Client will be installed. Wait for the installation to complete.



When installation is complete, click Close.





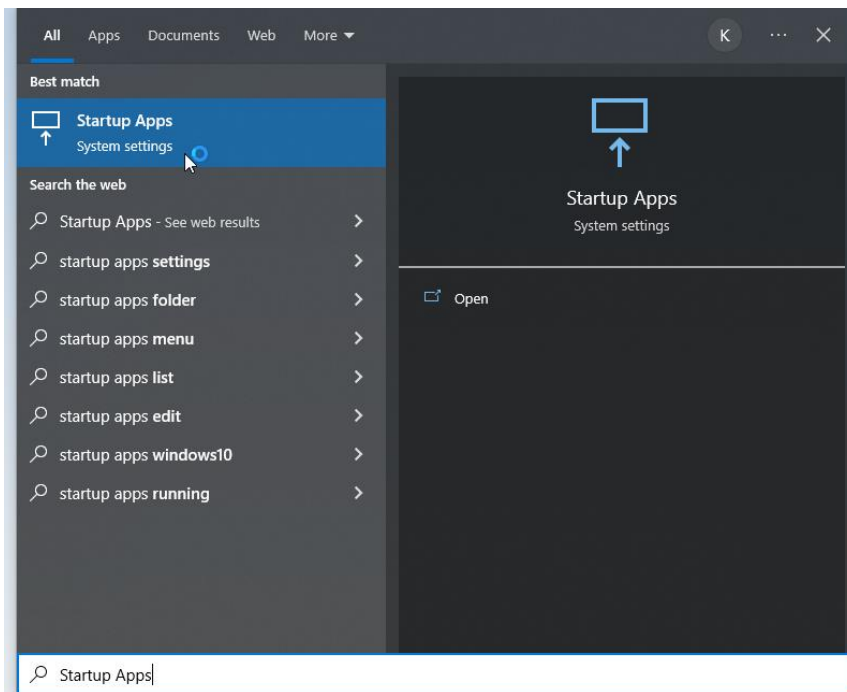
Confirm Installation

If the SAP SLC installed correctly, it should be in the user's Startup Apps.

Click on the Window Search icon.

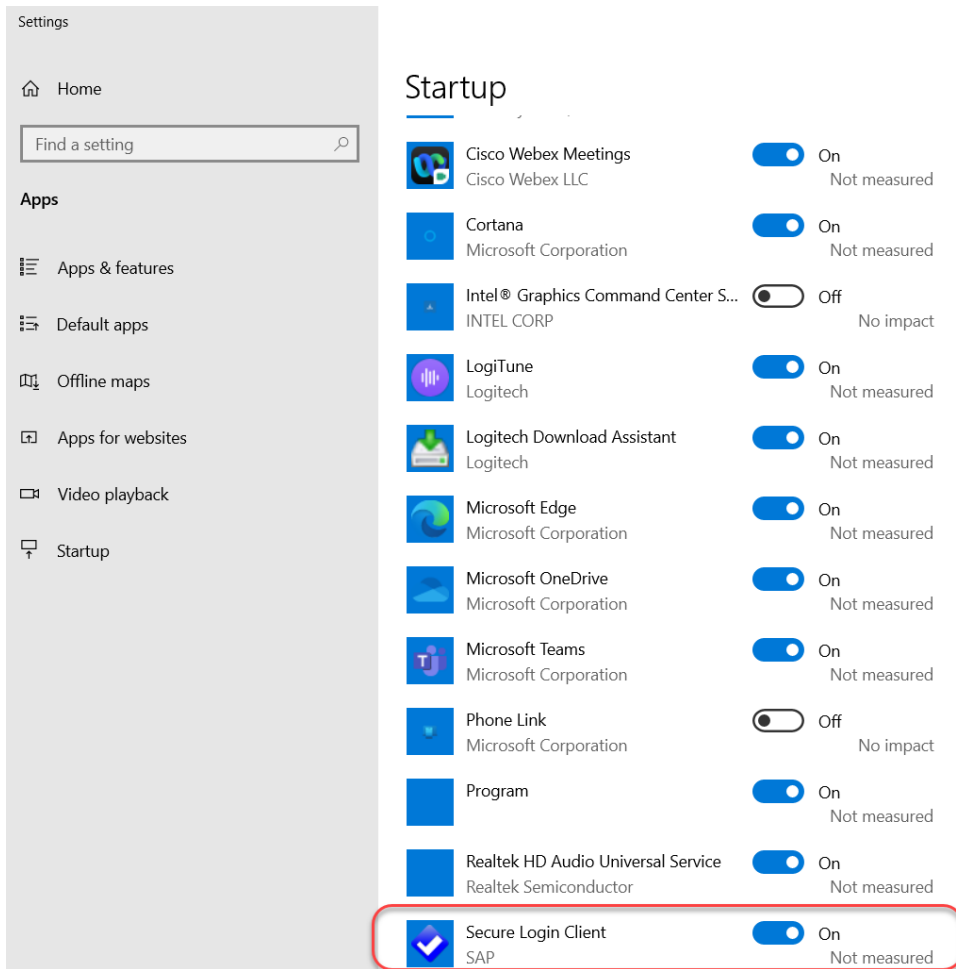


In the Search field, type "Startup Apps." Then click the Startup Apps/System settings result.





The Startup App listing displays. Ensure SAP SLC is displayed in this list and that the toggle is on.



You have successfully installed the SAP Secure Login Client, and it will start during Windows login.

Unattended Installation

After downloading the SAPSetupSLC.exe file, run it on the command prompt using administrator rights as shown below.

```
SAPSetupSLC.exe/silent
```