



Office of the State Controller

SAP GUI Installation Upgrade

Installation by Software Center

1. The preferred method of loading the SAP GUI upgrade is through the Microsoft Endpoint Manager and selecting the Software Center. This can be done from your Start menu by searching for the Software Center. The SAP GUI upgrade can be found under Applications. This method does not require Administrator rights.

If working from home, VPN must be turned off before attempting to install from the Software Center.

If for some reason the installation fails using the above method, you should proceed to step two below.

2. Installation by download from the OSC website - [SAP GUI 770 is located on the OSC website](#).

Installation by Download from OSC website

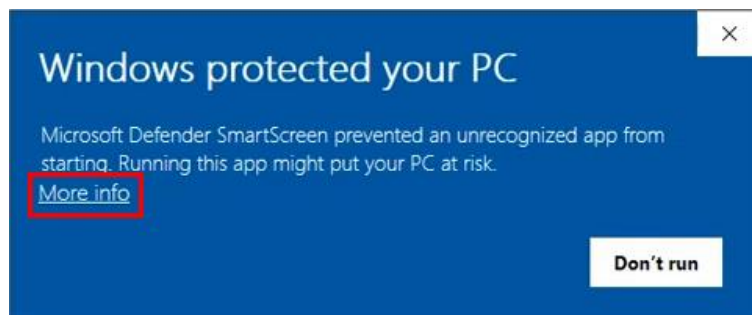
[SAP GUI 770 is located on the OSC website](#)

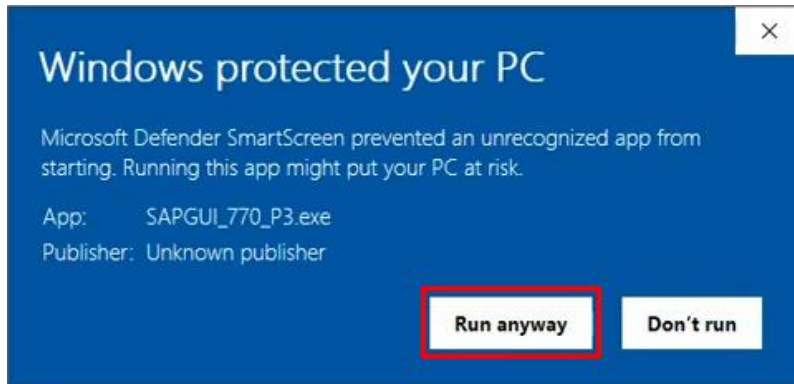
Important Information! User must “exit” SAP GUI application or errors will occur during installation/upgrade. Installation may require a reboot. Save and close all work before installing.

PC Administration rights are needed to install or upgrade the SAP GUI software.

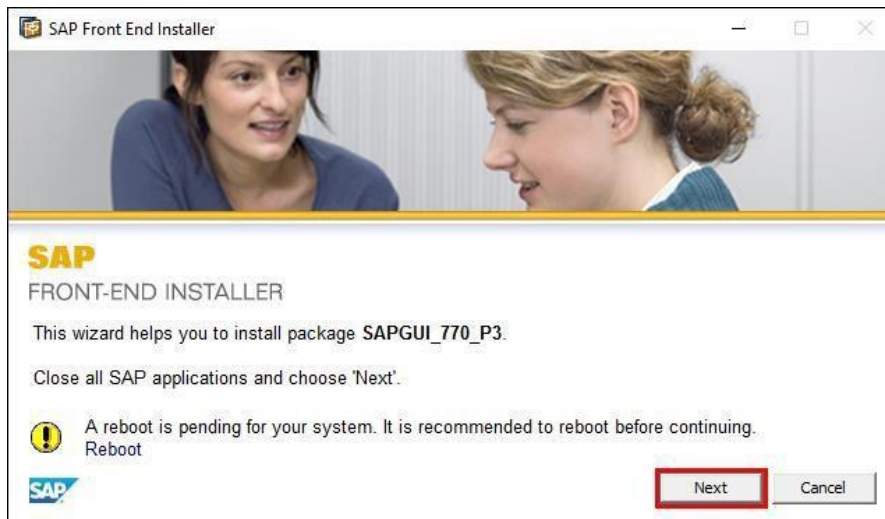
Download the SAPGUI_770_P3 zip file into a local folder. Then extract the zip file to the same location. Double click the SAP_GUI_P3.exe to begin the installation.

Pop Up Warnings occur if using the install method from the OSC website.



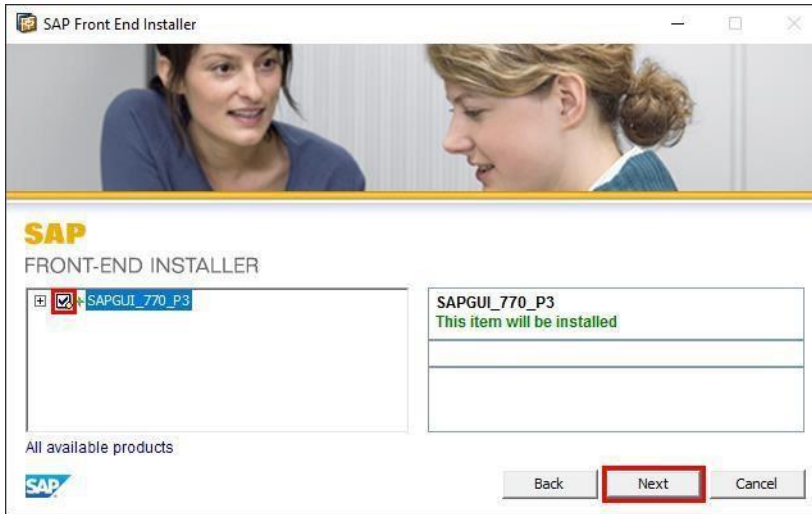


1. SPGUI_770_P3.exe file
2. Wait for the extraction to finish.
3. Select the "Next" button.

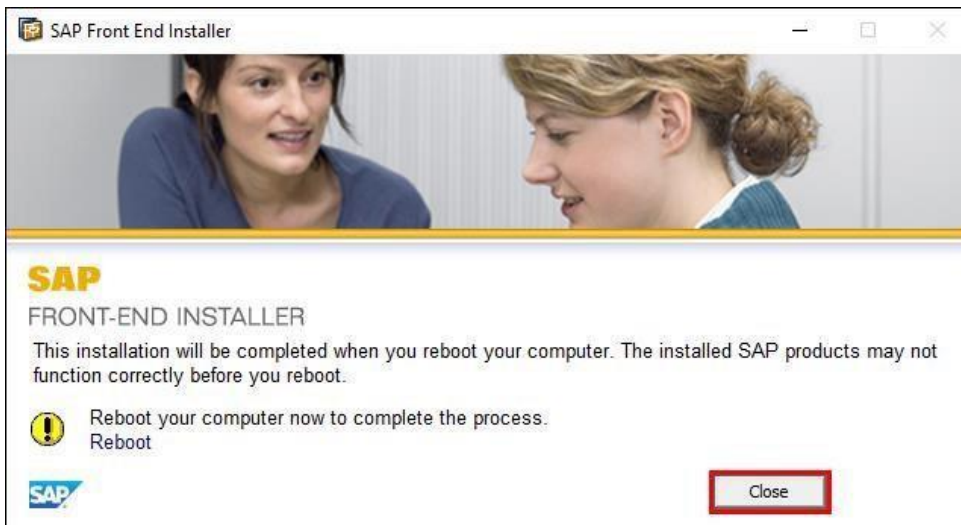




- Click on the box for SAPGUI_770_P3 and select Next.



- Wait for the installation/upgrade to finish.
- Select Close button to complete the installation/upgrade.



- Please reboot if you are prompted to "reboot" the PC.



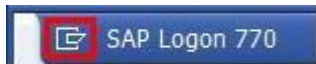
Checking the SAP GUI 770 version and Patch Level

1. Launch SAP GUI from the desktop. The below icon should be visible:



SAP Logon

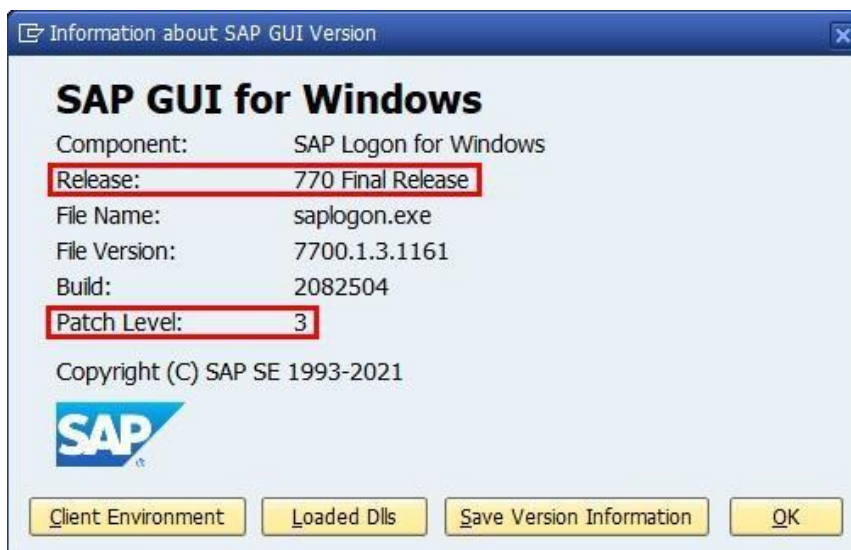
2. Click on the top left corner icon of the SAP Logon 770 screen.



3. Select the "About SAP Logon"



4. Check the release and patch level information.





Security Settings

1. Launch SAP GUI from the desktop.

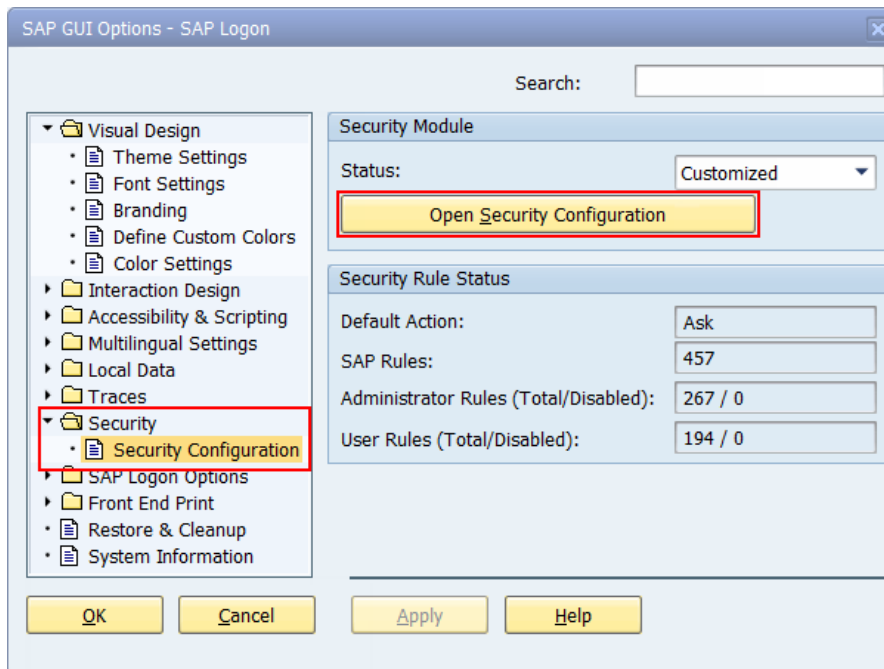


SAP Logon

2. Click on the top left corner icon of the SAP Logon 770 screen.
3. Select “Options”

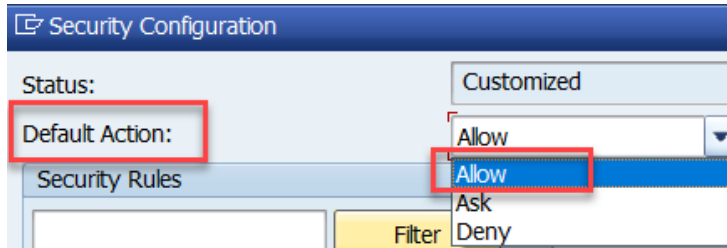


4. Open “Security” folder. Then select “Security Configuration” and click on “Open Security Configuration.”

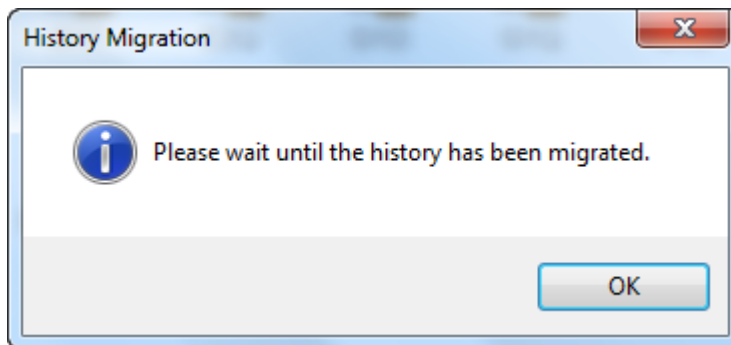




5. Click on the **“Default Action”** drop down and change **“Ask”** to **“Allow.”** Click Apply and OK.



6. When finished, click **“OK”** to exit.
7. Occasional Pop Up:



If you receive this message, click OK and it will run in the background until completed. If SAP GUI does not open within 10 minutes, try opening again.