

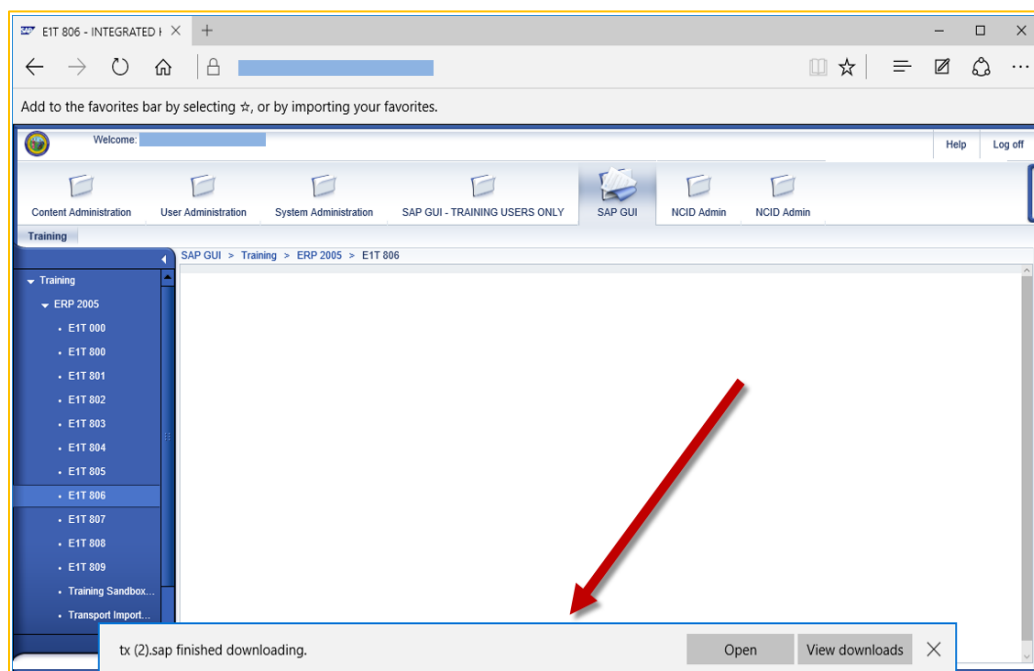
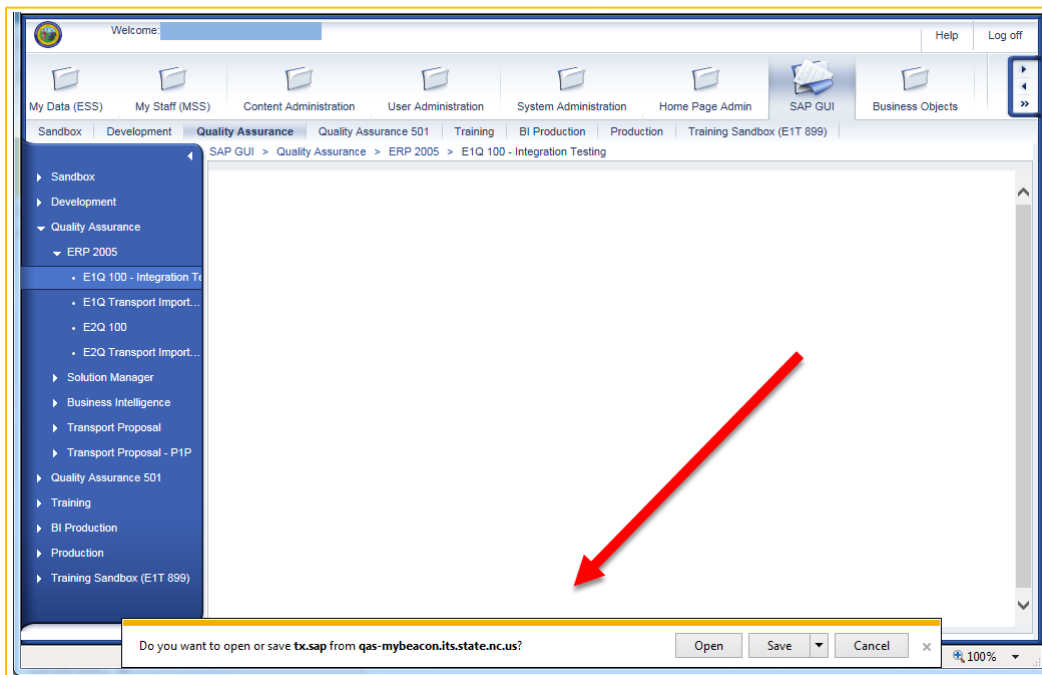


# INTEGRATED HR-PAYROLL SYSTEM

HR | PAYROLL | BENEFITS | TRAINING | TIME

## Personally Owned PC Requirements

**NOTE:** The browser settings shown in this document do not prevent the security banner pop-up message from displaying at the bottom of the browser window when launching a SAPGUI client from the browser. End-users will need to click the *Open* button on the prompt to proceed.





If your home computer does not meet the following minimum requirements, we cannot guarantee you will be able to access the Integrated HR-Payroll System (formerly BEACON):

**Personal Computer (PC) Minimum Requirements**

- **Personal computer** (PC) with an Intel Pentium-compatible 1+ gigahertz (GHz) **processor**
- **Memory:** 1 gigabyte (GB) of RAM
- **Hard disk:** 1 gigabyte (GB) of available hard disk space

**PC Software**

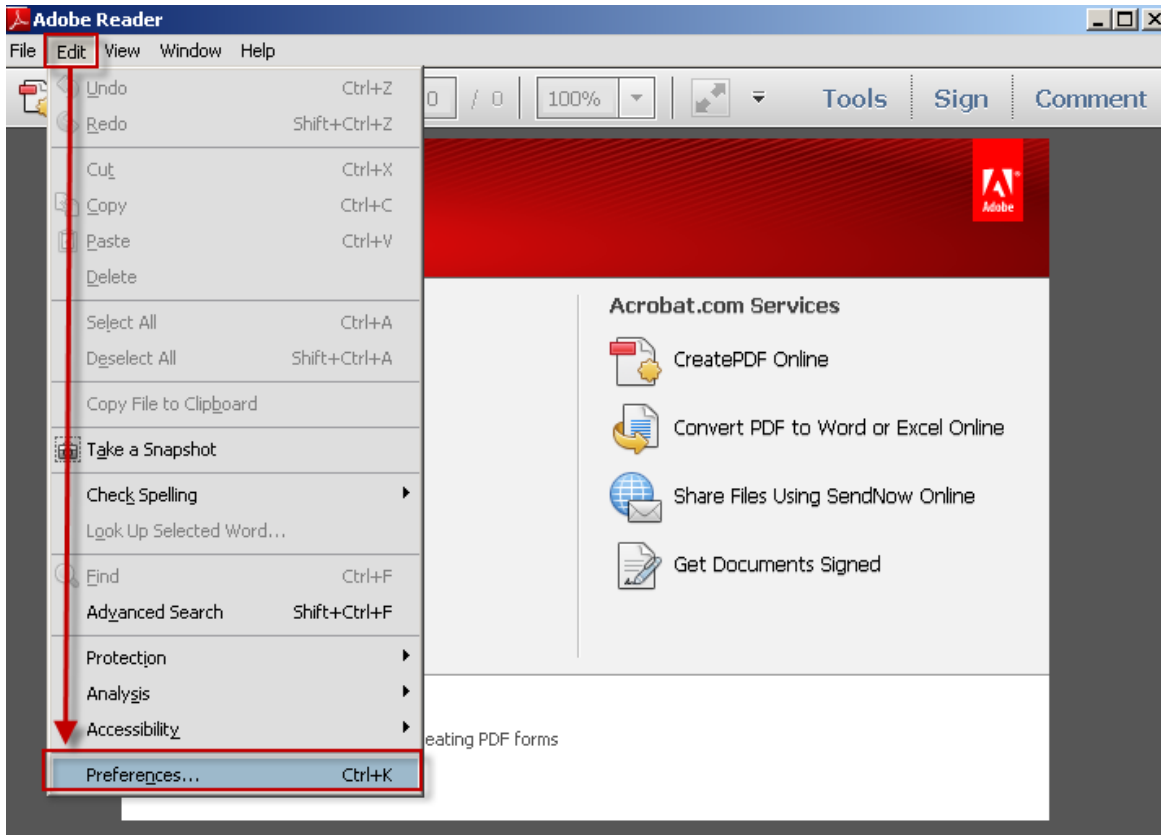
- **Operating Systems:** Windows 10
- **Acrobat Reader:** X, XI, DC
- **Supported Browsers:**
  - Fiori:**
    - **Windows** – Microsoft Edge (Chromium)
    - **Android** – Google Chrome
    - **IOS** – Safari
  - Portal:**
    - **Windows** – Microsoft Edge (Chromium)

**Note:** The following information is meant to help you gain access to the Integrated HR-Payroll System (formerly BEACON) using your home computer. If you have reservations about making adjustments to your home computer, then we suggest you attempt to gain access to the Integrated HR-Payroll System through a state computer, which should already be properly configured. Please make sure to always protect your Microsoft Sign in password.



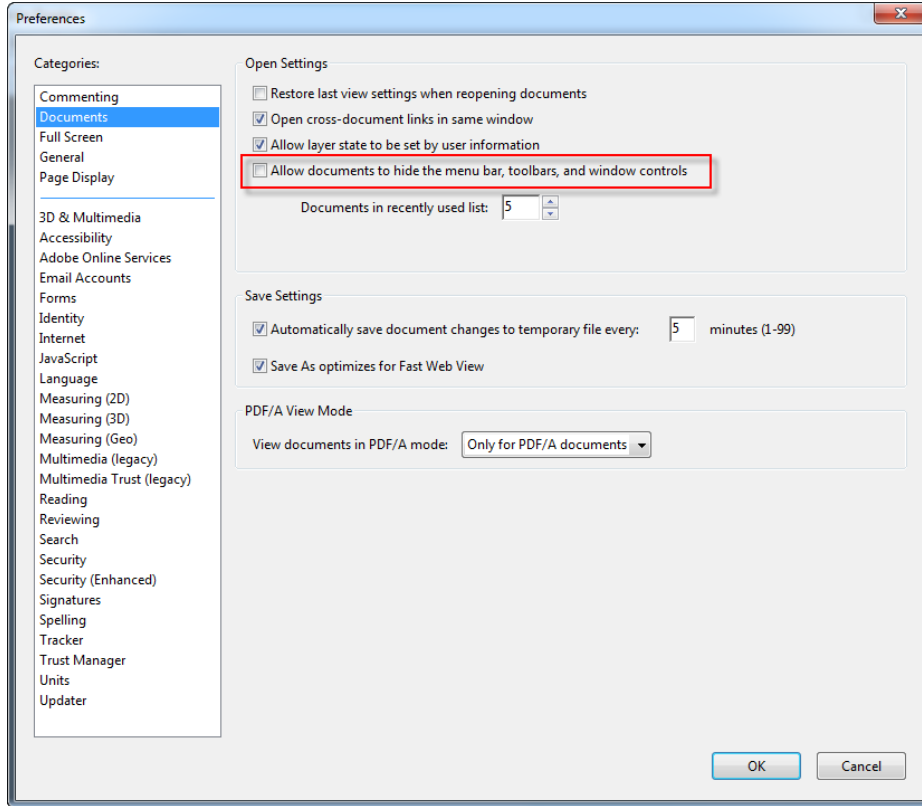
## ADOBE READER SETTINGS:

1. Close all browsers
2. Open the Adobe Reader DC (**Start** → **All Programs** → **Adobe Reader**)
3. Click on **Edit** → **Preferences** → **Documents**



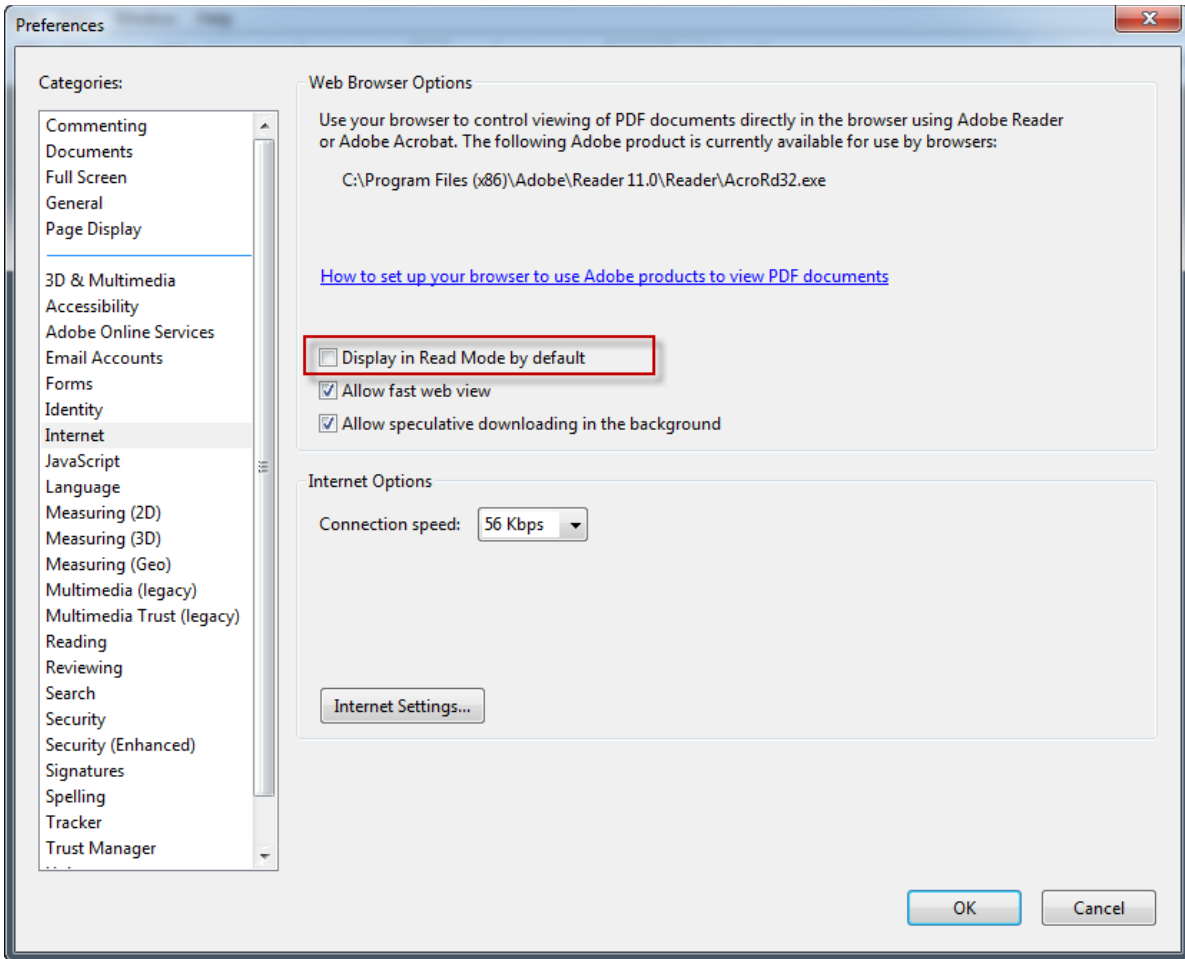


4. Uncheck the “Allow documents to hide the menu bar, toolbars, and window controls” checkbox:





5. Click on the “**Internet**” option and uncheck the *Display in Read Mode by default* checkbox:



6. Click **OK** when done. Open a browser, login to the Integrated HR–Payroll System (formerly BEACON portal) and verify that the pay statement displays correctly.